

Technical information

Setup built-in steering wheel remote interface.

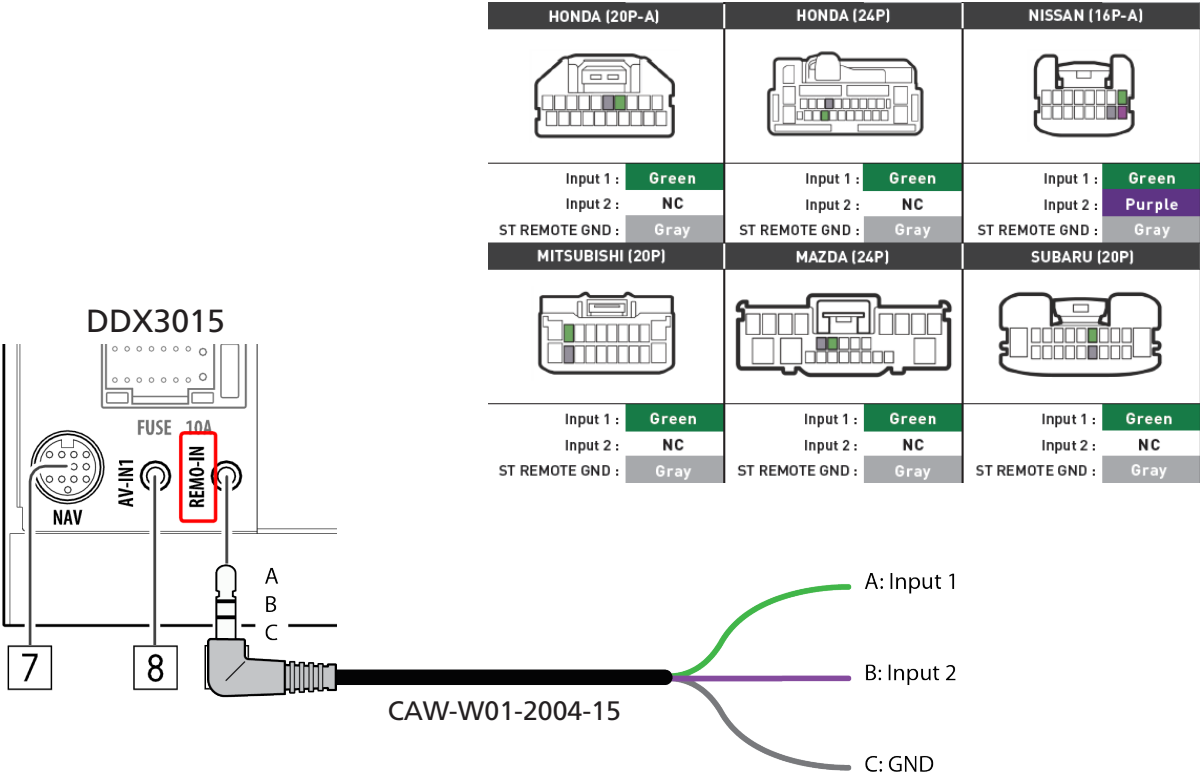
DNX715WDAB, DNX4150DAB, DNX4015BT, DNX4015BTR
 DDX7015BT, DDX5015DAB, DDX5015BT, DDX4015BT, DDX3015

(Only compatible with steeringwheel remote controllers based on resistor ladder network!)

• Connect Steering wheel remote control to the unit.

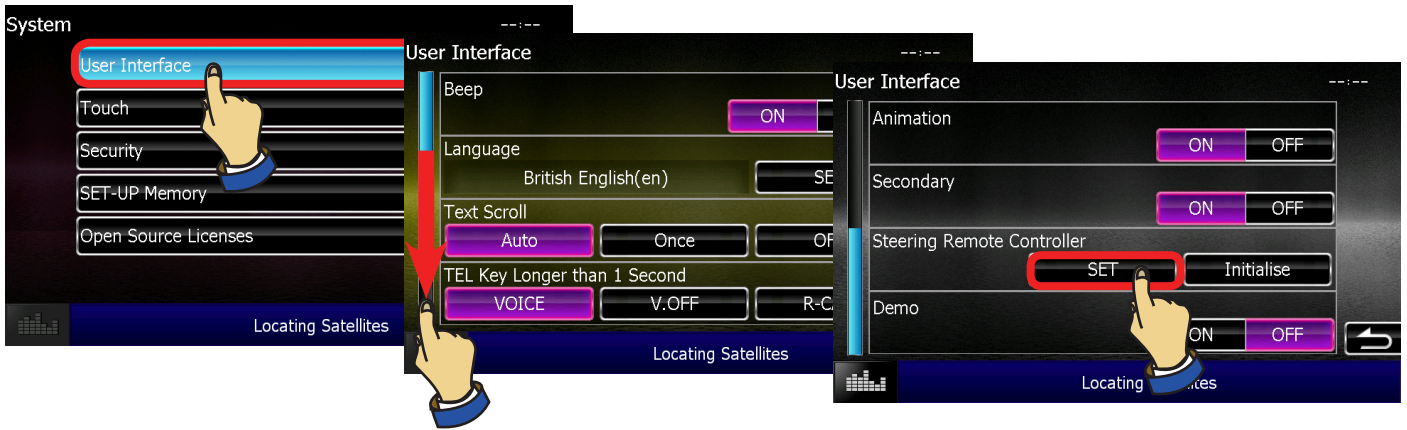
This built-in steering wheel remote works only in case of steering wheel remote controllers based on a resistor ladder network in combination with a compatible Kenwood 2015 multimedia unit. The input can be found on the back-side of the unit marked "REMO-IN".

For connection information on the cars side, please contact your local car dealer.

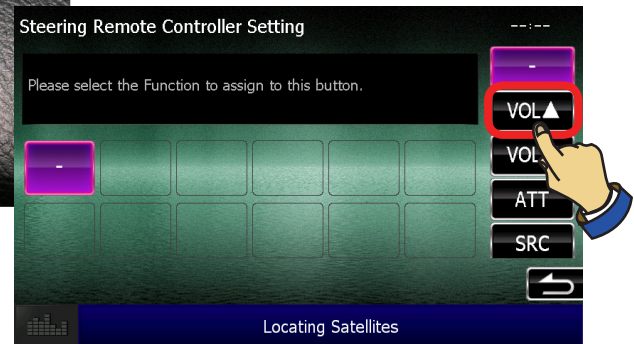
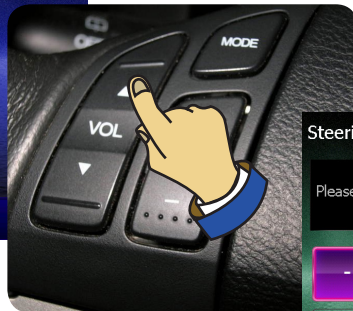


• Setup steering wheel remote interface





Push on a command button on the steering wheel

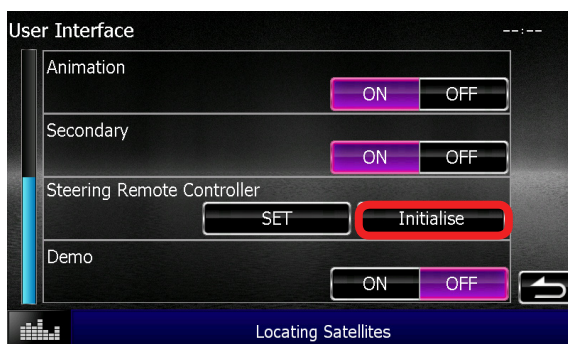


Select the corresponding command on the Kenwood unit.
By scrolling down you can find more commands.



Do this until all commands are selected and confirm by pushing [Done]
The unit is now ready to use

• Reset the steering wheel remote interface



By pushing [Initialise] you can reset the steering remote controller